

# Total Health Scan

## Dr. Brimhall's 10 Step Protocol

- I. Remove Nerve Interference
  - A. Adjustments, Cranial, Visceral, Percussion, etc
- II. Rebalance Electro-magnetics
  - A. Magnet, T. Enzymes, Harmonizer, T. Sheild, Whole System EEP
- III. Reset Adrenals and the General Adaptive Syndrome (GAS)
  - A. DSF, Vegie DSF
- IV. Repair Nutrition for Glandular or System Weakness
  - A. Primary Reflex Scan
  - B. Secondary Reflex Scan
  - C. Endocrine Scan
- V. Remove Infective Organisms
  - A. Immune support - T. Virx, T. Multimune, T. YST Redux, T. Para, T. Strept
- VI. Replace Enzymes and/or Hydrochloric Acid
  - A. T. Enzymes, Hypo D
- VII. Re-Inoculate the Bowel Flora
  - A. T. Probiotic
- VIII. Remove Abnormal Emotional Patterns
  - A. Color Glasses, Callahan, Tuning forks, Ocular Release Guided Imagery
- XI. Reprogram the Body for any Allergies/Sensitivities
  - A. A/SERT
- X. Remove Heavy Metals and/or toxins
  - A. Homeopathic Metals, Professional Tens, Bio Cleanse

### Clearing Procedure

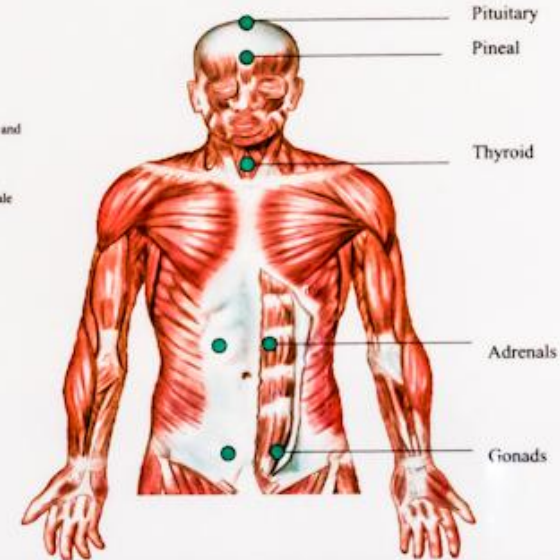
**Testing Procedure:** complete all of steps 1-4 before correcting.

1. Using a strong muscle, check the Master reflex for patient testability
  - If the muscle is:
    - a. Strong- the patient is not testable.
    - b. Weak- the patient is testable.
2. Check K27's bilaterally for neurologically switching
  - a. Strong- the patient is not switched.
  - b. Weak- the patient is switched.
3. Check the Stretch Reflex for positive General Adaptive Syndrome (G.A.S.)
  - a. Strong- the patient is not in G.A.S.
  - b. Weak- the patient is in G.A.S.
4. Check patient with E.M.F. for electromagnetic sensitivity
  - a. Strong- the patient is not electromagnetically sensitive.
  - b. Weak- the patient is electromagnetically sensitive.

### Corrective Therapy

1. DSF - De-Stress Formula
- Multipolar Magnet
- Water
- Total Enzymes
- If steps 1-4 test strong, the patient is neurologically "locked up". Give the patient both the DSF and the multipolar magnet, and retest the patient.
- If the patient remains "locked up" after DSF, they may be selectively dehydrated. Have the patient drink warm water, and continue to hold some in their mouth while retesting them.
- If patient remains "locked up" go through this check
  - Whole System EEP-emotional/electrical balancer
  - Crucial Challenge(breathing pattern to find then correct)
  - Chew Total Heart
  - Check for scar tissue locking them up
  - Check anterior taler subluxation

### Endocrine Check



Check the reflexes individually and then pituitary to each one.

Nutrition = Total GHR,  
Total Male/Female  
Glan plus M, F

### I. CHECK FOR TESTABILITY AND SWITCHING

1. Master Point - DSF, T. Enzymes, T. Heart, W.S. EEP, H2O

### II. REBALANCE ELECTROMAGNETICS - magnet

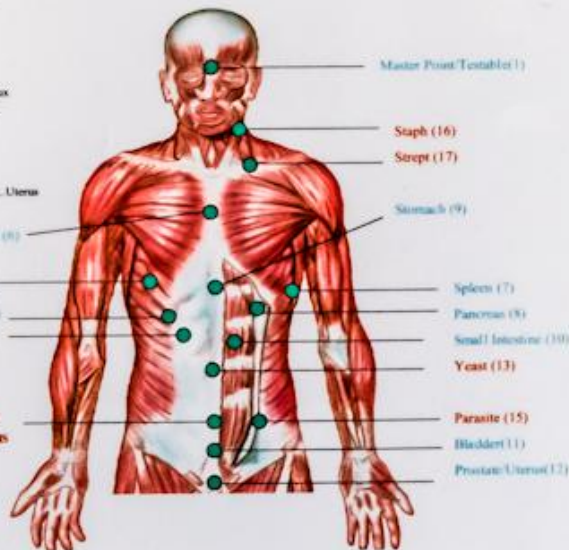
### III. RESET ADRENALS (G.A.S.)

- \*\*\*Adrenal Stretch - DSF, Vegie DSF

### IV. REPAIR NUTRITION

2. Liver - T. Liver Diox
3. Gall Bladder - T. Liver Diox
4. Cystic Duct - T. Liver Diox
5. Heart - T. Heart I,II
6. Homocysteine - Homocysteine Redux
7. Spleen - DSF, Homocysteine Redux
8. Pancreas - Vana Chien
9. Stomach - T. Upper GI
10. Small Intestine - T. Leaky Gut
11. Bladder - T. Virx, T. Multimune
12. Prostate/Uterus - C.L. Prostate/C.L. Uterus

## PRIMARY REFLEXES



Heart (5) - Homocysteine (6)

Liver (2)

Gall Bladder (7)

Cystic Duct (4)

Virus (14)

### V. REMOVE INFECTIVE ORGANISMS

13. Yeast - T. YST Redux
14. Virus - T. Virx
15. Parasite - T. Para
16. Staph - T. Multimune
17. Strept - T. Multimune, T. Strept

Master Point/Testable (1)

Staph (16)

Strept (17)

Stomach (9)

Spleen (7)

Pancreas (8)

Small Intestine (10)

Yeast (13)

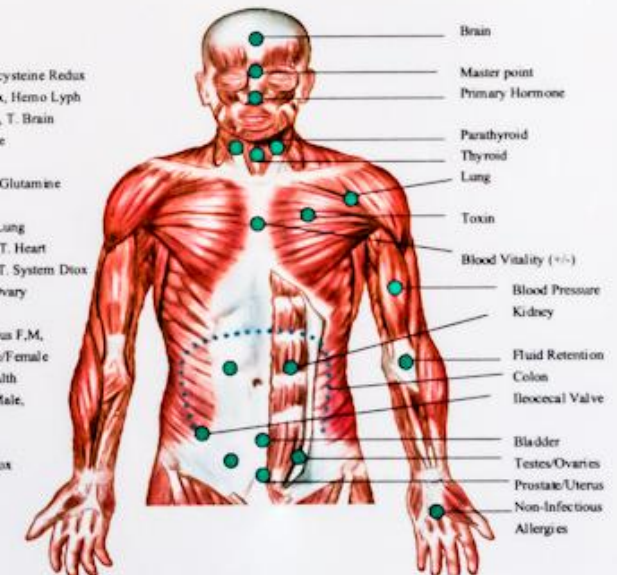
Parasite (15)

Bladder (11)

Prostate/Uterus (12)

## SECONDARY REFLEX POINTS

- Bladder - T. Virx, T. Multimune
- Blood Pressure - T. Heart I,II, Homocysteine Redux
- Blood Vitality - Homocysteine Redux, Hemo Lyph
- Brain - C.L. Brain-Spinal, C.L. RNA, T. Brain
- Colon - T. Probiotics, T. L-Glutamine
- Fluid Retention - T. Heart I,II
- Ileocecal Valve - T. Probiotics, T. L-Glutamine
- Kidney - C.L. Kidney
- Lung - T. Virx, T. Multimune, C.L. Lung
- Master Point - DSF, Enzymes, H2O, T. Heart
- Non-Infectious Allergies - T. Liver, T. System Diox
- Ovary - T. GHR, Glan plus F, C.L. Ovary
- Parathyroid - T. Calcium, T. GHR
- Primary Hormone - T. GHR, Glan plus F,M, T. Male/Female
- Prostate - C.L. Prostate, Prostate Health
- Testicle - T. GHR, C.L. Orchid, T. Male, Glan plus M
- Thyroid - T. GHR, C.L. Thyroid
- Toxin - T. Liver Diox, T. System Diox
- Uterus - C.L. Uterus



Brain

Master point

Primary Hormone

Parathyroid

Thyroid

Lung

Toxin

Blood Vitality (+/-)

Blood Pressure

Kidney

Fluid Retention

Colon

Ileocecal Valve

Bladder

Testes/Ovaries

Prostate/Uterus

Non-Infectious Allergies